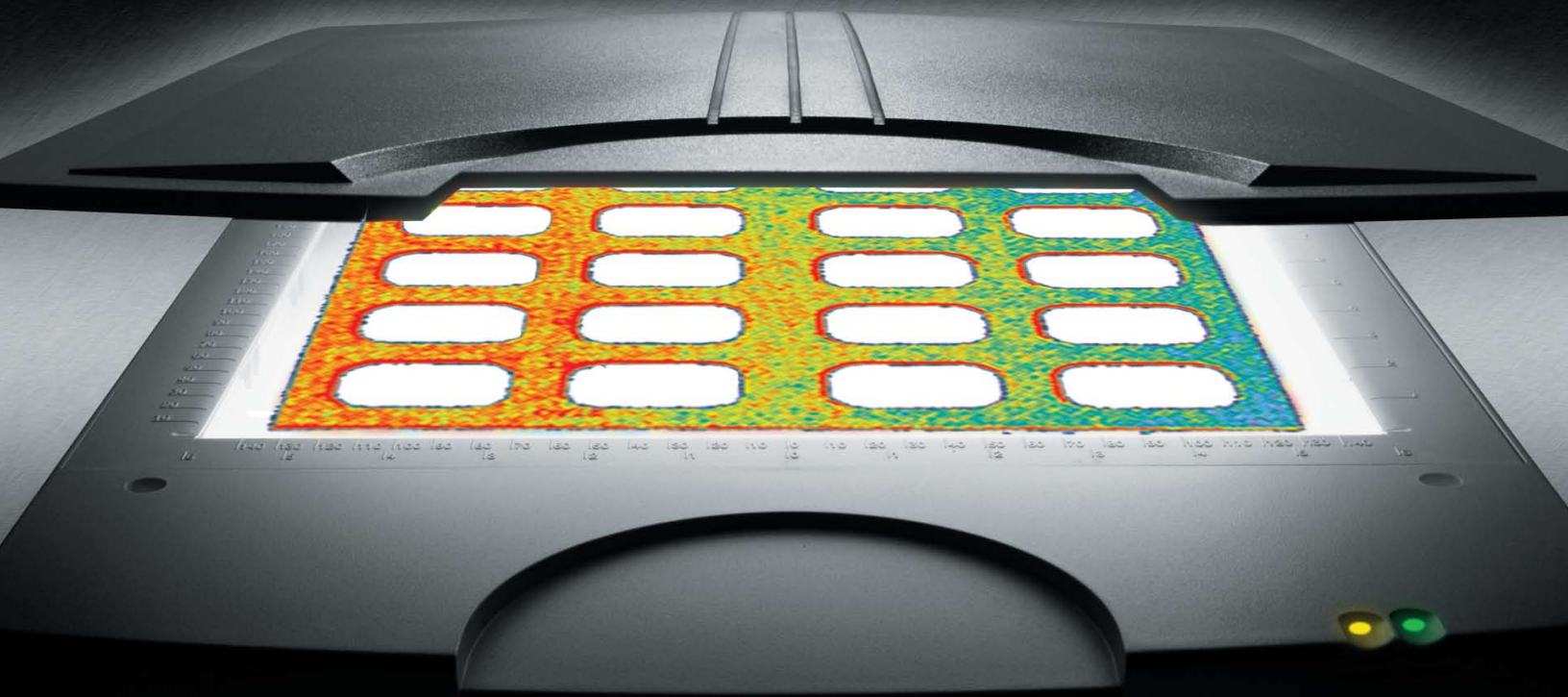


FUJIFILM PRESCALE SCANNER SYSTEM
FPD-8010E



Imagine a sensor as large and as thin as this page

FUJIFILM

Fujifilm Prescale scanner system is a revolutionary stress measurement instrument for analyzing pressure distribution and magnitude. Fujifilm Prescale scanner system's user-friendly Windows based software enables the characterization of how force is disbursed in any process or assembly where two surfaces contact or impact.

A World Of Uses

With the introduction of the Fujifilm Prescale scanner system, engineers now have a truly affordable tool of unparalleled power and accuracy. Whether your function is R&D, design or quality assurance, Fujifilm Prescale scanner system improves yield, ensures parallelism, registers the precise characteristics of an impact, validates press uniformity and aids in all types of machine calibration.

Any situation in your manufacturing process or R&D center where there are two objects or surfaces coming into contact, presents an opportunity for Fujifilm Prescale scanner system to perform.

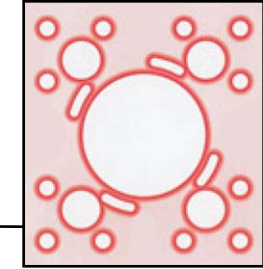
Unlike FEA, Fujifilm Prescale scanner system is a post-process interpretive system that actually collects data from a proprietary tactile transducer.

A better way of looking at pressure

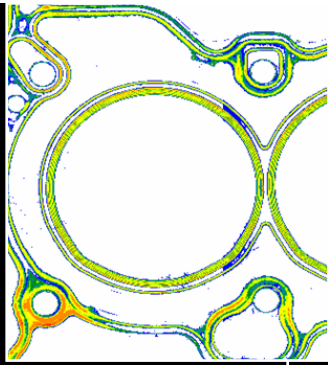
Fujifilm Prescale scanner system enables you to view, rotate and flip your application image in a two or three dimensional space while choosing among four different color palettes. Images can be further enhanced by varying the number of colors displayed or by utilizing Fujifilm Prescale scanner system's powerful smoothing and thresholding functions. All in an effort to uncover otherwise unseen detail.

Precise Statistics makes this system unbeatable

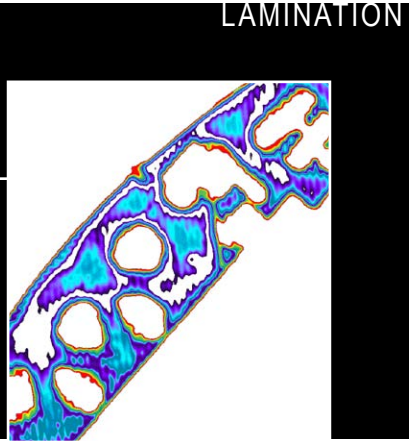
Fujifilm Prescale scanner system reads and interprets pressure variation by optically analyzing your pressure indicating sensor films and assimilating this data into a series of easy-to-read formats. A single keystroke generates the Histogram, a report that reveals the statistical distribution of pressure levels throughout your image. Of course, as with all Fujifilm Prescale scanner system functions, you can perform a Histogram on a user-defined region of interest.



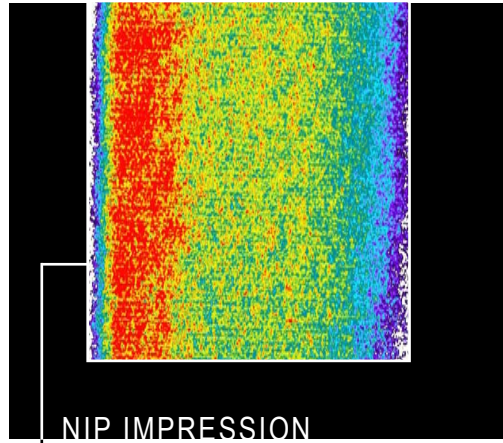
Fujifilm Prescale scanner system's Grid-maker function can divide your image into any number of user-defined quadrants. The software then automatically calculates statistical information for each segment.



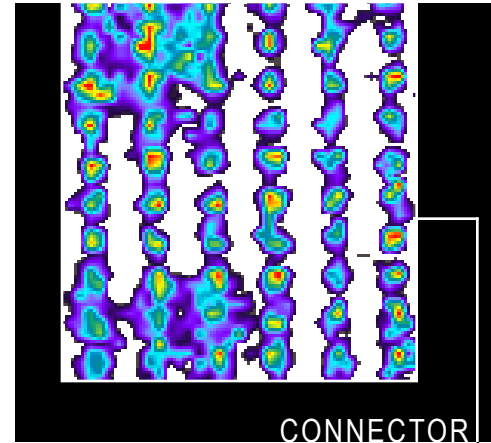
GASKET



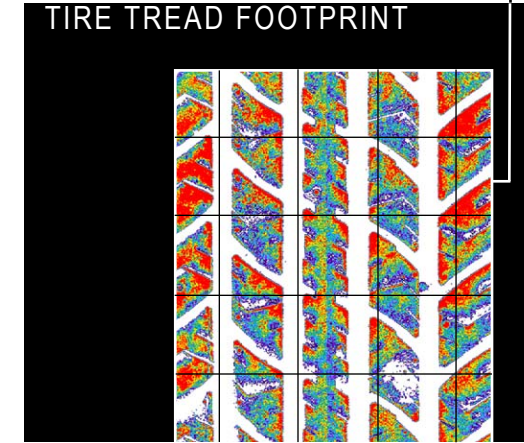
LAMINATION



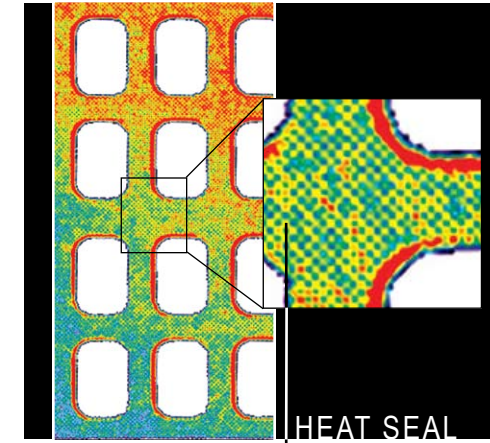
NIP IMPRESSION



CONNECTOR



TIRE TREAD FOOTPRINT



HEAT SEAL

What exactly is this system?

Fujifilm Prescale scanner system consists of a specially calibrated densitometric scanner and Windows software. An essential component of the Fujifilm Prescale scanner system is the pressure indicating film commonly known as Fujifilm Prescale. These sensor films change coloration permanently and instantaneously in response to pressure being applied to them. The Fujifilm Prescale scanner system is then used to create an enhanced image and interpret the stress marks on the film. From this, Fujifilm Prescale scanner system renders high resolution, color calibrated images and a wealth of statistical information pertaining to the analyzed film.



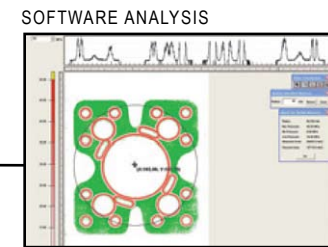
Powerful, simple to use

While Fujifilm Prescale scanner system is equipped with an extensive array of features, you can perform a simple analysis in a matter of minutes. The system makes it extremely easy for a new user to extract and utilize important information. Simply scan in your exposed pressure indicating film, key in a few input variables, and Fujifilm Prescale scanner system instantly generates full-color pressure maps and accompanying statistical data. Moreover, Fujifilm Prescale scanner system is accurate to within $\pm 4\%$ — unprecedented in the field of tactile pressure measurement.

Information at the touch of a button

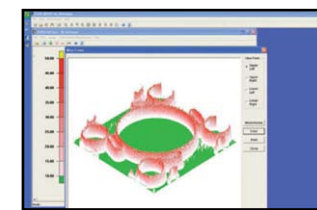
One example of Fujifilm Prescale scanner system's powerful, single keystroke features is the ability to determine the pressure profile along a user-defined line. This line can be reduced to the width of a pixel, or expanded as wide as the image itself. This is a useful tool for assessing narrow bands of pressure over unusual or intricate shapes.

The region statistics function yields total pressure, average PSI (or metric Kg/cm²) and standard deviation for the entire image or a user-defined region.



SOFTWARE ANALYSIS

PRESSURE IS DISPLAYED IN 3-D FORMAT



Take a closer look

This heat seal impression is magnified 300%, enabling a pixel by pixel analysis of its high pressure areas (shown in red). With Fujifilm Prescale scanner system, images can be expanded or reduced from 25% to 400%. Fujifilm Prescale scanner system's manual and auto-cropping features allow you to quickly slice off extraneous parts of an image, enabling detailed examination of a specific region of interest.

Fujifilm Prescale scanner system's Duplicate zoomed image function utilizes a proprietary algorithm that can enlarge an image without the typically accompanying increase in graininess that typically occurs.

FUJIFILM

Fujifilm Prescale scanner system A TACTILE PRESSURE DISTRIBUTION ANALYSIS SYSTEM

From gaskets to flanges, bolted joint analysis to machine calibration, the unmatched Fujifilm Prescale scanner system - TACTILE PRESSURE ANALYSIS SYSTEM has proven itself to engineers the world over.

SPECIFICATIONS:

Product Name	FUJIFILM PRESSURE DISTRIBUTION MAPPING SYSTEM for PRESCALE
Model	FPD-8010E
Main Functions	Prescale image input function Pressure distribution display function/Pressure data output function 3D display function/polar coordinate display function
Scan Sizes	Single Read: 297mm X 210mm (11.7 in X 41.3 in) Maximum: 891mm X 1050mm (35.1 in X 41.3 in)
Resolution	0.125(200dpi) / 0.25(100dpi) / 0.5,1,2mm sq.
Dedicated Cover Weight	570g
Dedicated Cover Dimensions	70(H)X 290(W) X 364(D)mm
Packed Items	Dedicated software, dedicated cover, calibration sheet, installation manual, software license
Scanners	Epson V100, V200, V350, V300, V330, and V33

RECOMMENDED SOFTWARE:

OS	Windows 2000, XP, Vista and 7 (32/64bit)
CPU	Pentium® III 1GHz or Higher
Memory	512MB or more
Display	XGA or better, 65,000 colors or more

LEARN how the Fujifilm Prescale scanner system has helped companies from Boeing to Intel improve quality in the manufacturing process and increase production yields by calling 800.755.2201 (or 973.884.1755 from outside the USA) for a free product demonstration.



SENSOR PRODUCTS INC.
300 Madison Avenue
Madison, NJ 07940 USA
1.973.884.1755 fax 1.973.884.1699
email: sales@sensorprod.com
www.sensorprod.com